

# KAWASAKI KLX250S SU RACK HTP4-3-1



Thank you for purchasing Happy Trails products. Our products are proudly hand made in Boise Idaho, USA. If you have any questions or concerns about the installation of this product, please contact us directly at 1-800-444-8770 or e-mail [installation@happy-trail.com](mailto:installation@happy-trail.com).

Before you begin, place the bike on a hard level surface where you have room to work. Lay out the parts included in this kit and compare to the parts list on the final of these instructions. If any parts or hardware are missing, contact us immediately at the number or email listed above.

## Step 1

Begin by removing the two side panel bolts shown by arrows marked in Fig 1, as well as removing the tool bag from the rear fender.

Repeat this process on both sides of the motorcycle.

Fig1



## Step 2

Place two 3/4" Lx1/2" OD spacers in the rear fender as shown in Fig 2.

Fig 2



## Step 3

On the left side of the motorcycle begin threading an M665S bolt through a 3/16" washer and the SU Rack then through a 1 1/4" Lx1/2" OD spacer as shown in Fig 3. Do not tighten completely.

Fig 3



#### Step 4

At the front mount point insert an M650S bolt through a 3/16" washer and the SU Rack. Place a 3/4" Lx1/2" OD spacer and begin tightening the bolt. Do not tighten completely.

You may now insert an M655S bolt through the mounting point on the rear fender, sliding the bolt through the spacers inserted in Step 2. Do not tighten this bolt completely.

#### Step 5

On the right side of the motorcycle, insert an M65S bolt and 3/16" washer through the center mount point and place a 1 1/4" spacer between the rack and plastic. Begin threading the bolt into place but do not tighten completely.

You may now insert an M655S bolt and 3/16" washer through the mounting point on the rear fender, sliding the bolt through the spacers inserted in Step 2. Do not tighten this bolt completely.

#### Step 6

At the front mounting point on the right side of the motorcycle insert a M665S bolt and 3/16" washer through the SU Rack and place a 1 1/4" Lx3/4" OD spacer between the SU Rack and the body panel of the motorcycle. Do not tighten this bolt completely.

#### Step 7

Attach the bumper to either side of the SU rack by threading each of the four M6x16mm bolts through the bumper and into the mounting holes at the back of the SU rack. Place one 3/16" washer on the front and on the back of each bolt and thread the bolts into the included M6 nylock bolts.

You may now tighten all bolts on the rack to the following torque specifications:  
M6—8ft/lbs

Fig 4



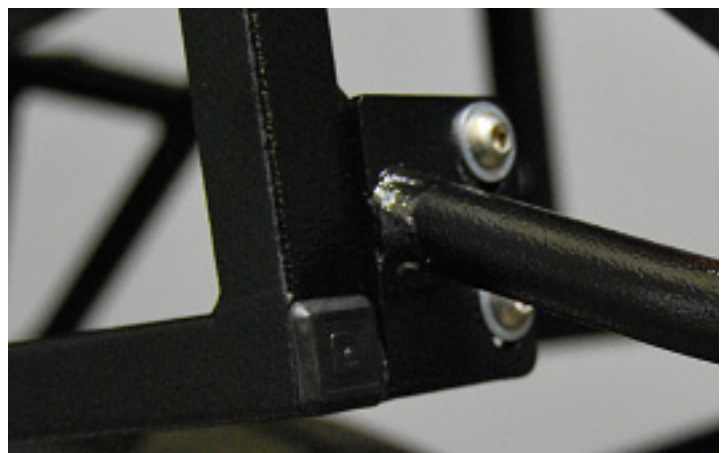
Fig 5



Fig 6



Fig 7





## Step 8

Optional: you may retain the existing tail bag by placing two additional 3/4" Lx 1/2" OD spacers in the front holes left by the removal of the tail bag. Bolt the tail bag in place with the included M8x50 bolts, and 3/16" washers

Fig 8



### Recommended Tools:

5mm Allen Wrench  
10mm Box End Wrench  
12mm Box End Wrench

### Hardware List:

Right Side SU Rack  
Left Side SU Rack  
Stabilization Bumper

See bolt list on final page for further hardware



Happy Trails Products

6/26/12  
Rev. 1  
HH

# 2009+ KLX250S SU Rack Bolt Kit

