

HTP5-4-5.1 KTM 950/990 NERF BAR



Thank you for purchasing Happy Trails products. Our products are proudly hand made in Boise Idaho, USA. If you have any questions or concerns about the installation of this product, please contact us directly at 1-800-444-8770 or e-mail installation@happy-trail.com.

Before you begin, place the bike on a hard level surface where you have room to work. Lay out the parts included in this kit and compare to the parts list on the final of these instructions. If any parts or hardware are missing, contact us immediately at the number or email listed above.

Step 1

Remove the screw from the bottom of the tank as shown in Fig 1. Repeat this process on both sides of the motorcycle.

Fig1



Step 2

Place an M875C bolt with a 5/16" flat washer through the lower hole in the NERF bar, then into the hole in the bottom of the tank noted in Step 1. Tighten this bolt until snug to hold the engine guard in place while completing Step 3.

Fig 2



Installation on both sides of the NERF bar are the identical.

Step 3

Place an aluminum frame clamp on the frame tube near the rear of the motor as shown in Fig 3.

Fig 3



Place a plastic spacer between the NERF rear mounting point and the aluminum frame clamp. Insert two M625C screws through two 3/16" flatwashers. Slide the screws through the NERF bar mounting point, plastic spacer and begin tightening them into the aluminum frame clamp. Do not tighten these bolts completely.

Step 4

Remove the bolt from the hole indicated by the arrow at the bottom of Fig 4. Refer to this mounting point for Step 5. Align the support bar as shown. The left side and right side support bars differ so ensure the top tab lines up correctly with the NERF bar before inserting bolts.

Place a 5/16" flatwasher on a M825C bolt and insert it through the upper tab in the NERF bar and through the support bar. Place an additional 5/16" flat washer and M8N on the back of the bolt. Do not tighten this bolt completely.

Step 5

At the lower support bar mount noted in Step 4, place a 1/2" L x 3/4" OD x .319" spacer between the support bar and the recess in the frame section near the header pipe as shown in Fig 5. Insert an M845C bolt and 5/16" flatwasher through the support bar and spacer and thread it into the frame section.

You may not tighten all bolts completely.

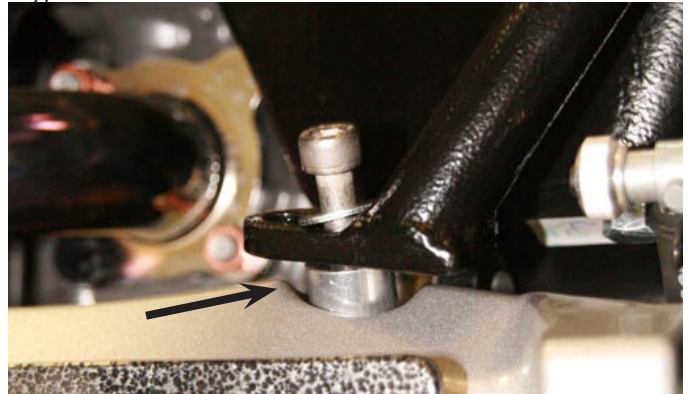
M8 bolts should be torqued to 18 ft/lbs

M6 bolts should be torqued to 9ft/lbs .

Fig 4



Fig 5



Recommended Tools:

13MM Wrench

6mm Allen Wrench

5MM Allen Wrench



Hardware List:

Right Side NERF Bar

Left Side NERF Bar

Right Side Support

Left Side Support

Two Aluminum Frame Clamps

Two Plastic Spacers



Happy Trails Products

4/13/12

Rev. 1

HH