



Thank you for purchasing Happy Trails products. Our products are proudly hand made in Boise Idaho, USA. If you have any questions or concerns about the installation of this product, please contact us directly at 1-800-444-8770 or e-mail installation@happy-trail.com.

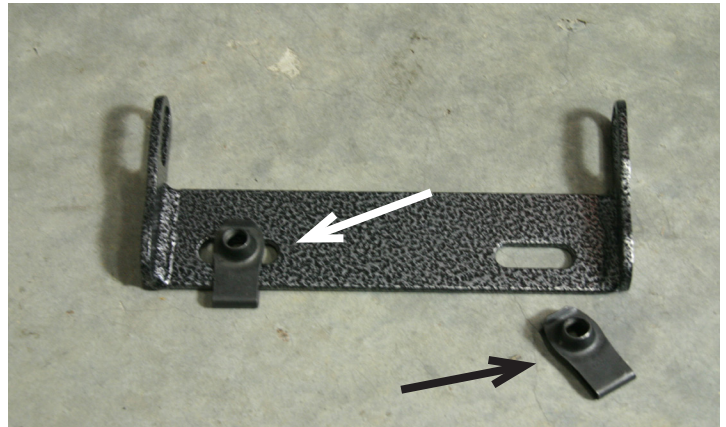
Before you begin, place the bike on a hard level surface where you have room to work. Lay out the parts included in this kit and compare to the parts list on the final of these instructions. If any parts or hardware are missing, contact us immediately at the number or email listed above.

Step 1

Begin by removing the factory skid plate from the bike.

Install two threaded "Speed clips" onto the rear mounting bracket as shown in Fig 1.

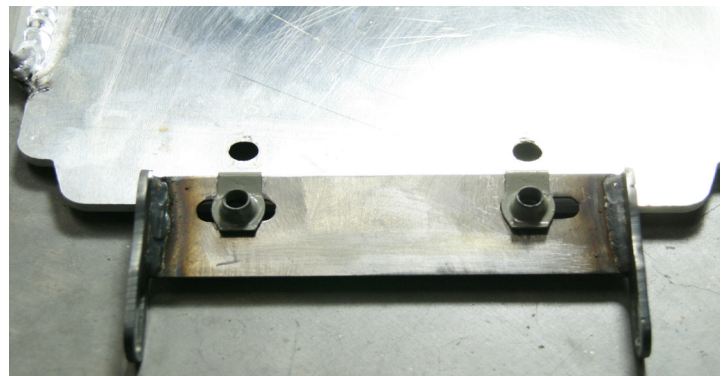
Fig1



Step 2

Bolt the rear mounting bracket onto the two holes at the rear edge of the skid plate using two M825T bolts. Leave these bolts loose to allow easier fitment of the skid plate.

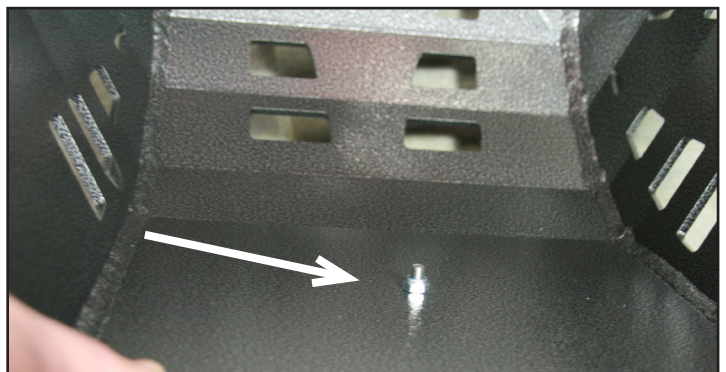
Fig 2



Step 3

Insert an M616T bolt through the countersunk hole at the center of the skid plate. Thread the M6N nut onto the bolt and tighten it to 9ft/lbs.

Fig 3



Step 4

Place the rubber insulator onto the bolt installed in Step 3. The bolt is installed to center the rubber insulator. It is held in place by pressure between the skid plate and engine case.

Fig4



Step 5

Slide the rear mounting bracket in position at the rear of the motor as shown in Step 5. Place an M8 Lock washer on each of the M825S bolts, and place an M8 Flat Washer on top of each lock washer. Bolt the mounting bracket and skid plate into the threaded tabs as shown in Fig 5.

Fig 5



Step 6

Bolt the triangular mounting plate into place as shown in Step 6. Bolt it into place using two M820S bolts and two M8 Flat Washers. Using a 6" long allen wrench makes installation of this plate much easier. Tighten these bolts to 18 ft/lbs.

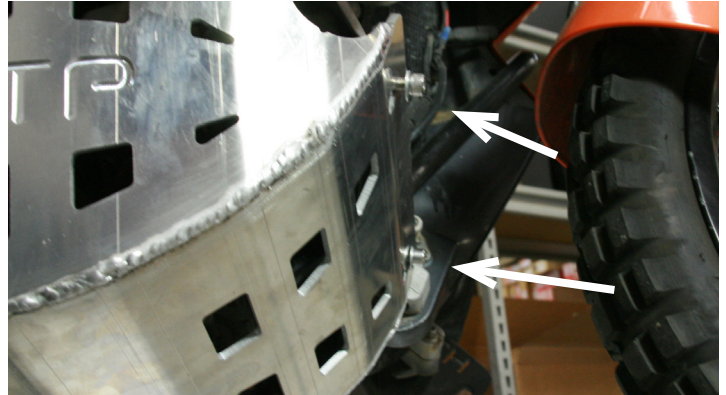
Fig 6



Step 7

Next, bolt the skid plate in place using two M820C bolts into the triangular bracket installed in Step 6. The skid plate may need to be forced upward somewhat in preloading the rubber insulator. Tighten these bolts to 18 ft/lbs.

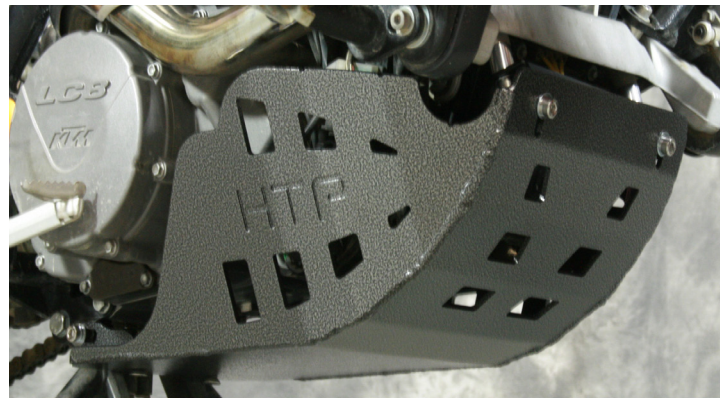
Fig 7



Step 8

Tighten the remaining bolts to 18 ft/lbs. Congratulations! You've successfully installed your Happy Trails KTM 950/990 Skid Plate!

Fig 8



Recommended Tools:
5mm Allen Wrench
6mm Allen Wrench
13mm Box End Wrench



Hardware List:
Skid Plate
Front Mounting Plate
Triangular Mounting Plate
Rubber Insulator Block
2 threaded "speed clips"



Happy Trails Products

4/8/13
Rev. 2
HH

KTM950/990 Skid Plate

