



**HAPPY-TRAIL.COM**

*Dual Sport & Adventure Touring Specialists*

Thank you for purchasing Happy Trails products. Our products are proudly hand made in Boise Idaho, USA. If you have any questions or concerns about the installation of this product, please contact us directly at 1-208-377-8771 or e-mail support@happy-trail.com.

Before you begin, place the bike on a hard level surface where you have room to work. Lay out the parts included in this kit and compare to the parts list on the final pages of these instructions. If any parts or hardware are missing, contact us immediately at the number or email listed above.

### Step 1

Remove the 4 bolts from the right and left sides as shown in Fig 1 using a 4mm allen wrench and **remove the plastic covers**.

The plastic covers will not be reused.

Remove the top bolt from the rear passenger peg brackets. These bolts will not be reused.

Fig1



### Step 2

Use included **LockTite** on threads for all these bolt locations. Install the right side SU rack using 4 M620S with 4 M6 Flat washers at the 4 locations of the rack indicated in Fig 2. Use additional M8FW under M6 FW at top plastic locations to protect plastic. **NOTE: Metal SU mount plate goes BEHIND plastic at top two locations.**

Insert a 1/2" spacer into the top passenger peg bolt hole and secure rack using an M850S with M8 flat washer at this front mount point (see bottom Fig 3.)

Leave all bolts slightly loose until all parts are installed.

Fig 2

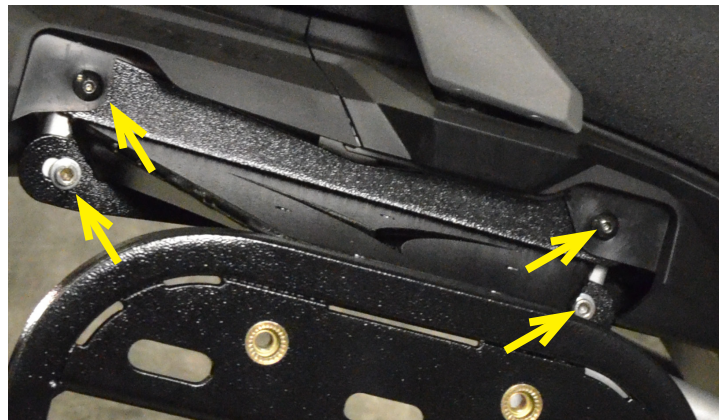


Fig 3



### Step 3

Repeat Step 2 to install left side SU rack.

Don't forget the 1/2" spacer at the front mount point.

Leave all bolts slightly loose until all parts are installed.

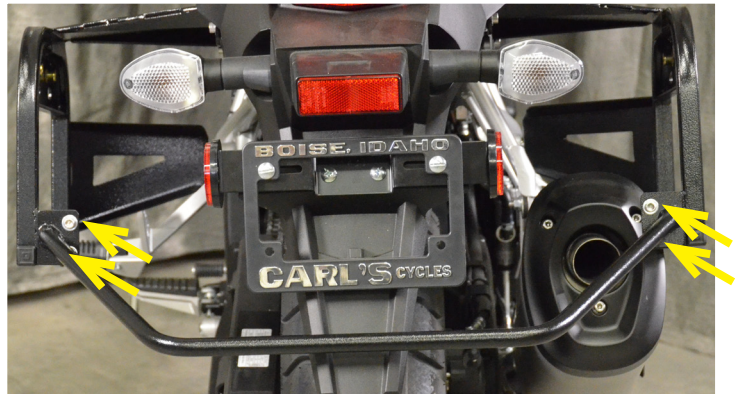
#### Step 4

Install the rear support bumper using 4 M616S bolts, 8 M6 Flat Washers, and 4 M6N nuts at the 4 locations indicated in Fig4.

Note the bumper angles down from its mount point.

Tighten these M6 bolts to 9 ft/lbs

Fig 4



#### Step 5

Tighten the remaining bolts to the following specifications:

M6 bolts should be tightened to 9 ft/lbs

M8 bolts should be tightened to 18 ft/lbs

Fig 5



#### Recommended Tools:

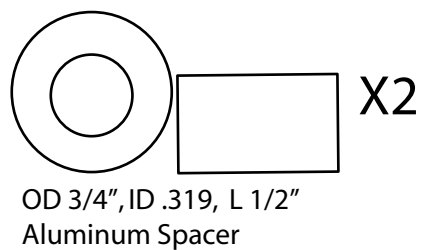
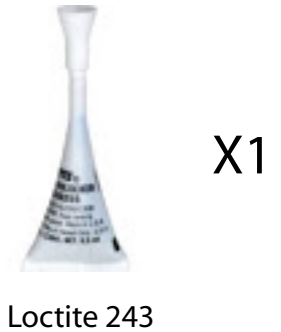
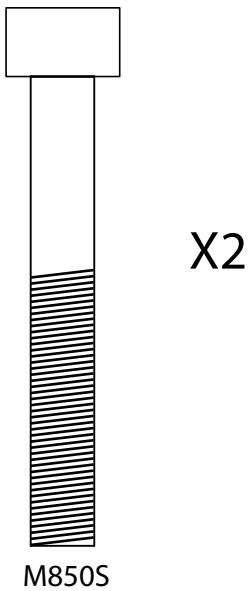
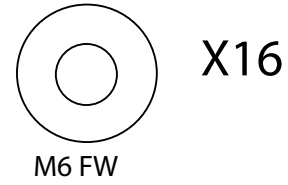
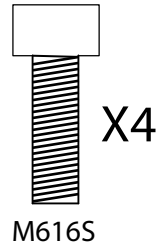
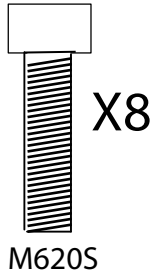
4mm Allen (hex) Wrench  
5mm Allen (hex) Wrench  
6mm Allen (hex) Wrench  
10mm box end wrench or socket



#### Hardware List:

- (1) Left Side SU Rack
- (1) Right Side SU Rack
- (1) Rear Support Bumper
- (1) Bolt Kit
- (1) Installation Instructions





Torque Specs  
6mm = 9 ft/lbs  
8mm = 18 ft/lbs