

SUZUKI DL1000 SU RACKS HTP7-6-1B



Thank you for purchasing Happy Trails products. Our products are proudly hand made in Boise Idaho, USA. If you have any questions or concerns about the installation of this product, please contact us directly at 1-800-444-8770 or e-mail installation@happy-trail.com.

Before you begin, place the bike on a hard level surface where you have room to work. Lay out the parts included in this kit and compare to the parts list on page 3 of these instructions. If any parts or hardware are missing, contact us immediately at the number listed above.



Step 1

Remove the seat.

Loosen the factory tail rack's rear bolts. Remove the front bolts from under the seat. Leave the tail rack in place.

Step 2

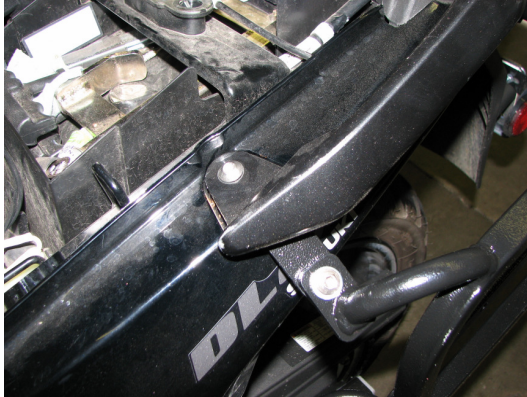
Remove factory exhaust shields by removing the two bolts pictured at the right. Some customers modify this cover to work with the SU racks.

Remove the rear muffler mounts securing them to the frame. These bolts will no longer be used.



Step 3

Remove upper passenger peg mounting bolts. It may also be helpful to loosen the lower mounting bolts to aid installation.



Step 4

Install the left SU rack on the bike starting with the flat tab that fits under the factory tail rack. The slotted portion of this tab attaches to the bike, the hole side goes to the SU rack. Use the M8x20 BH bolt. Leave this connection and all other bolts during this installation loose until the entire rack is installed. This is very important. Just thread the bolts in far enough to hold.



Step 5

Repeat the process with the right SU rack.

Install the 3/4 spacer between the SU rack and the muffer mounting points. Using a M8x65 SHCS, attach this point.



Step 6

Install the bumper bracket between the two sides and route it under the license plate light. Attach using the 4 M6x16 SHCS bolts, 8 5/16 flat washers and nyloc nuts.

Now it is time to snug down all mounting bolts and recheck your installation. Make sure all bolts are installed and tight.

Tools Required:

Hex Keys (Allen Wrenches)

5mm

6mm

Box end wrenches

10mm

13mm

Bolt List:

- 2 M8x45 SHCS (Socket Head Cap Screw)
- 4 M8x20 BHCS (Button Head Cap Screw)
- 2 M8x80 SHCS
- 4 M6X16 SHCS
- 4 M6 NYLOCK NUTS
- 4 M8 NYLOCK NUTS
- 8 3/16 FW (Flat Washer)
- 10 5/16 FW
- 2 3/4" OD X 3/4" LONG Spacer



Parts List:

- Left and Right SU racks
- 2 Flat tabs
- Bumper



Happy Trails Products

3/6/2008
Rev. 1