



HAPPY TRAILS PRODUCTS

HONDA AFRICA TWIN SKID PLATE HTP3-2-88

Thank you for purchasing Happy Trails products. Our products are proudly hand made in Boise Idaho, USA. If you have any questions or concerns about the installation of this product, please contact us directly at 1-800-444-8770 or e-mail support@happy-trail.com.

Before you begin, place the bike on a hard level surface where you have room to work. Lay out the parts included in this kit and compare to the parts list on page 3 of these instructions. If any parts or hardware are missing, contact us immediately at the number or email listed above.

IMPORTANT!!!!

When installing Happy Trails racks, leave all bolt connections loose until the entire product is installed. Then go back and tighten all connections. We recommend the use of thread locking compound.

Step 1: Begin by attaching the upper guards to the skid plate by using the M6x16MM BHCS bolts and 6MM Ny-lock nuts.

See Figure 1

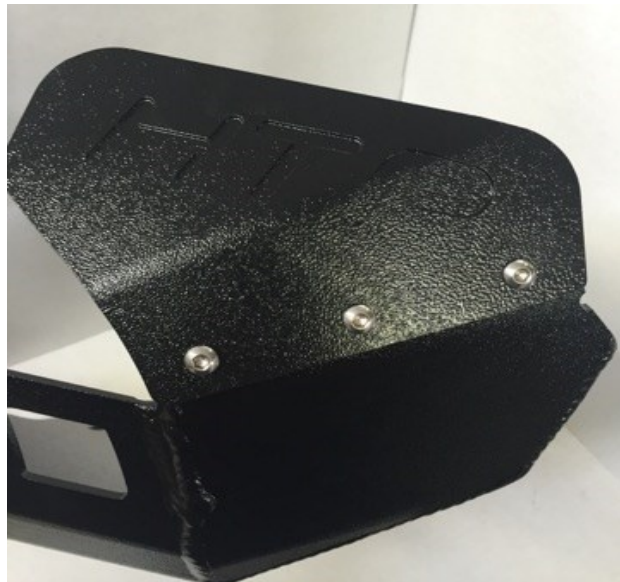


Figure 1: Upper Guard Attachment

Step 2: Starting on the left side of the bike, remove the two bolts on the frame near the foot peg. Keep these bolts as they will be reused.

See Figure 2



Figure 2



HAPPY TRAILS PRODUCTS

HONDA AFRICA TWIN SKID PLATE HTP3-2-88

Step 3: Next, place the adhesive rubber pads on the bottom cross bracket as pictured. See *Figure 3*

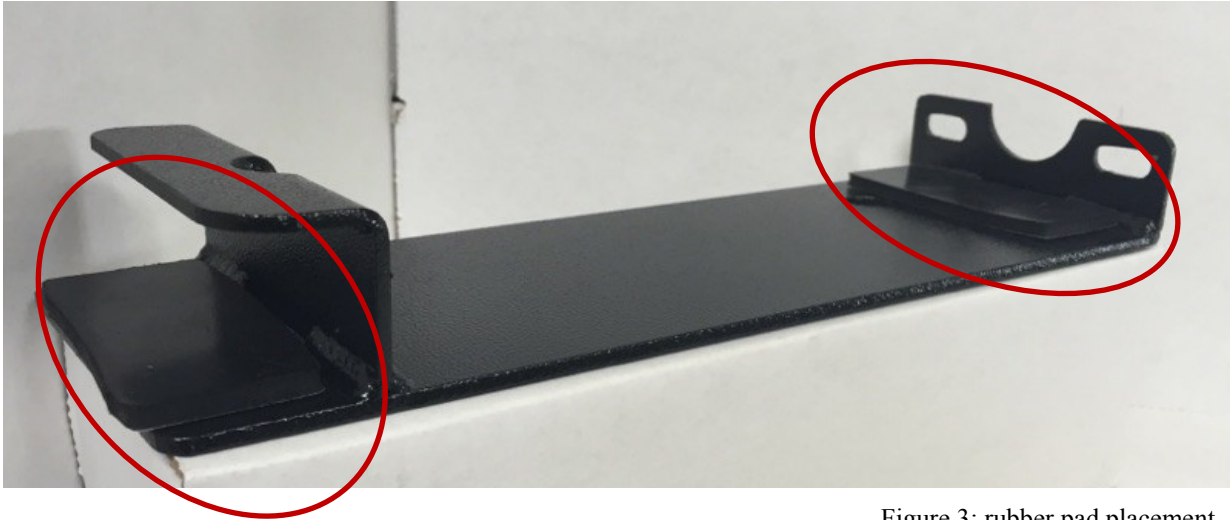


Figure 3: rubber pad placement

Step 4: Once the rubber pads are placed on the bottom cross bracket, place the cross bracket between the frame underneath the engine. Starting at a 45 degree angle, slide the boxed end over the right side of the frame (*Figure 4.1*), then slide the opposite end upward into position (*Figure 4.2*). The bolt holes should line up with the bolts removed from step two.



Figure 4.1



Figure 4.2



HAPPY TRAILS PRODUCTS

HONDA AFRICA TWIN SKID PLATE HTP3-2-88

Step 5: Now that the bottom cross bracket is in place, thread the bolts that were removed in step two through the bracket and into the frame.

Step 6: With the bottom cross bracket secured to the frame, place the skid plate up to the bike. Line the front mounting holes up with the mounting points on the front of the frame. Then place two M8x25MM BHCS Bolts and two M8 washer through the mounting holes in the front of the skid plate, and into the frame. Leave these bolts loose until the final step.

See Figure 5



Figure 5

Step 7: Next, with the remaining M8x25MM BHCS bolts and M8 washers, thread them through the bottom mounting holes in the skid plate and into the bottom cross bracket that was installed in step four.

See Figure 6



Figure 6



HAPPY TRAILS PRODUCTS

HONDA AFTICA TWIN SKID PLATE HTP3-2-88

Step 8: Now that all bolts are installed, and the skid plate is the correct position, tighten all bolts until completely snug. Do not over tighten bolts. Installation is now complete.



Component List:

Skid Plate
Right and Left Upper Guards
Bottom Cross Bracket
Hardware Kit

Hardware List:

M8x25MM BHCS	4
M8 Flat Washers	4
M6x16MM BHCS	6
M6 Nylock Nuts	6
Adhesive Rubber Pads	2

***Safety Note: Make sure to check the integrity of the skid plate and all hardware before each ride. ***