



HAPPY TRAILS PRODUCTS

HONDA CRF250L TAIL RACK HTP3-3-7

Thank you for purchasing Happy Trails products. Our products are proudly hand made in Boise Idaho, USA. If you have any questions or concerns about the installation of this product, please contact us directly at 1-800-444-8770 or e-mail support@happy-trail.com.

Before you begin, place the bike on a hard level surface where you have room to work. Lay out the parts included in this kit and compare to the parts list on page 3 of these instructions. If any parts or hardware are missing, contact us immediately at the number or email listed above.

IMPORTANT!!!!

When installing Happy Trails racks, leave all bolt connections loose until the entire product is installed. Then go back and tighten all connections. We recommend the use of thread locking compound.

Step 1: First, remove all four tie down bolts from the bike. There are 2 on each side of the bike See figures 1.1-1.2



Figure 1.1



Figure 1.2

Step 2: Next, remove the seat from the bike. Then remove the rear fender cover by gently pulling the side covers from the rear fender cover and then gently pulling up on the fender cover itself. The fender cover is clipped onto the bike, you should hear a dull snap once the fender has been released from the bike.

See Figure 2.1-2.2



Figure 2.1



Figure 2.2



HAPPY TRAILS PRODUCTS

HONDA CRF250L TAIL RACK HTP3-3-7

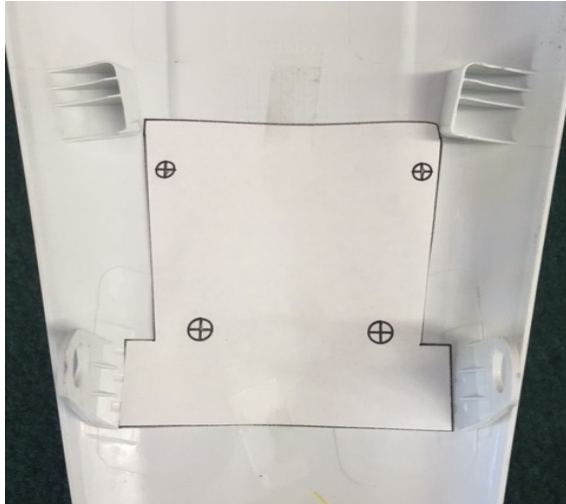


Figure 3: Line up the template as shown in picture.



Figure 4: Holes drilled in fender cover.

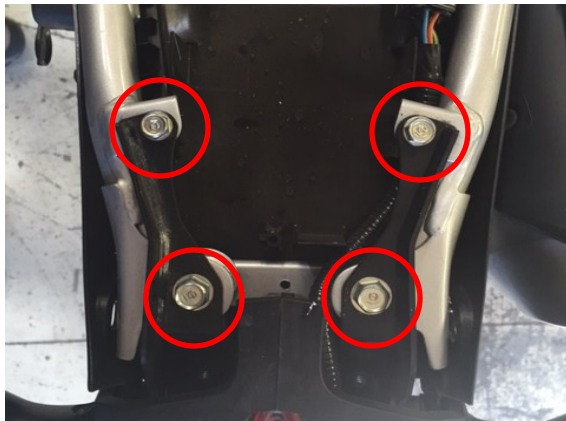


Figure 5: Remove the bolts circled above.

Step 3: Once the rear fender cover has been removed, set it on a solid flat surface so that it can be drilled using the template provided. With the inside of the fender facing up, tape the template on the fender as pictured below, making sure that wings on the template line up with the tabs towards the rear of the fender. *See Figure 3.*

Step 4: Once you have marked the holes and ensured that you have them in the correct position, drill the holes in the rear fender cover. Drill the rear holes to 5/8" and the front holes to 1/2". Make sure that the spacers fit snugly in the holes you just drilled. *See Figure 4*

Step 5: Next, remove the 4 bolts that hold the tail light assembly to the bike. The tail light should come loose, but should not come completely off the bike. *See Figure 5*



HAPPY TRAILS PRODUCTS

HONDA CRF250L TAIL RACK HTP3-3-7

Step 6: Once the bolts have been removed from the tail light assembly, place the 5/8"OD x 1 1/4" L spacers in the rear hole of the fender and the 1/2" OD x 1"L spacers in the forward holes. Then loosely mount the rear fender cover back on the bike.

See Figure 6



Figure 6

Step 7: Then, place an 8mm Flat Washer on an 8x60mm BHCS bolt and place it through one of the rear mounting hole in the tail plate. Then slide a 5/8" OD x 1/2" L spacer onto the bolt. Now, thread the bolt through the spacer in the rear fender cover, through the tail light assembly, and into the sub frame of the bike. This can be a little tricky and may require an extra set of hands. It is easiest to start only one bolt to hold everything together.

See Figure 7



Figure 7

Step 8: Now that you have at least one bolt started, place the remaining bolts and washers through the rail rack, through the remaining spacers, through the tail light assembly and into the sub frame. Keep all bolts loose until end of install.

See Figure 8



Figure 8: View of spacer underneath tail plate



HAPPY TRAILS PRODUCTS

HONDA CRF250L TAIL RACK HTP3-3-7

Step 9: Next, make sure that the side panels are attached to the rear fender cover and the rear tie down points are installed. Then place the seat back on the bike and bolt it down.

Step 10: Now that you have the seat, rear fender cover and tail plate on the bike, begin to tighten all bolts. Make sure all bolts are tight before riding or loading! Always check manufacturer's weight limits before using tail plate.



Hardware List:

6x60mm BHCS	2
8x60mm BHCS	2
6mm Flat Washer	2
8mm Flat Washer	2
5/8" OD x 1/2" L Spacer	2
5/8" OD X 1 1/4" L Spacer	2
1/2" OD x 3/4" L Spacers	2
1/2" OD x 1" L Spacers	2

Cut template out and follow Steps 3-4 on instructions.

