



# HAPPY TRAILS PRODUCTS

## HONDA CRF250L SKID PLATE HTP3-3-88

Thank you for purchasing Happy Trails products. Our products are proudly hand made in Boise Idaho, USA. If you have any questions or concerns about the installation of this product, please contact us directly at 1-800-444-8770 or e-mail support@happy-trail.com.

Before you begin, place the bike on a hard level surface where you have room to work. Lay out the parts included in this kit and compare to the parts list on page 3 of these instructions. If any parts or hardware are missing, contact us immediately at the number or email listed above.

### **IMPORTANT!!!!**

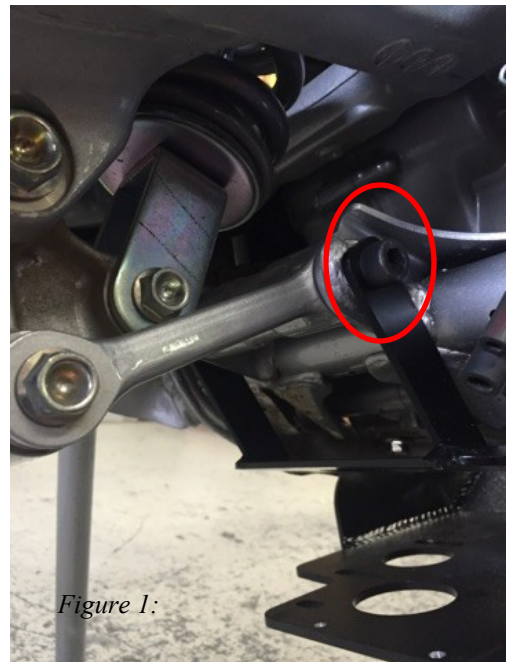
When installing Happy Trails racks, leave all bolt connections loose until the entire product is installed. Then go back and tighten all connections. We recommend the use of thread locking compound.

**Step 1:** Remove the stock plastic skid plate.

**Step 2: Remove upper suspension bolt from links. **\*\*CAUTION\*\*** REMOVAL OF THIS BOLT WILL ALLOW THE SUSPENSION TO EXTEND OR COLLAPSE IF DIRECTIONS ARE NOT FOLLOWED. THIS MAY RESULT IN SERIOUS INJURY OR DEATH.**

Place the bike on a centerstand, jack stand. safely lift the chassis of the bike to ensure there is no compression on the rear suspension while making sure the rear wheel is not off the ground. Remove the bolt at the location circled in figure #1, See Figure 1

*Figure 1:*  
**\*\*CAUTION\*\***  
read step 2 of the instructions carefully. Consult a professional mechanic that is comfortable and understands this process if needed.



*Figure 1:*

**Step 3:** Next, Place the bracket and replacement bolt as shown in figure 1. Leave the bolt loose until the skid plate is installed.



# HAPPY TRAILS PRODUCTS

## HONDA CRF250L SKID PLATE HTP3-3-88

**Step 4:** Place the skid plate in place. See Figure 2  
Next, attach the front bolts loosely. See Figure 3  
Next, attach the rear bolts connecting the skid plate to the rear bracket mount. figure 4&5.  
See Figure 4&5



Figure 2



Figure 3

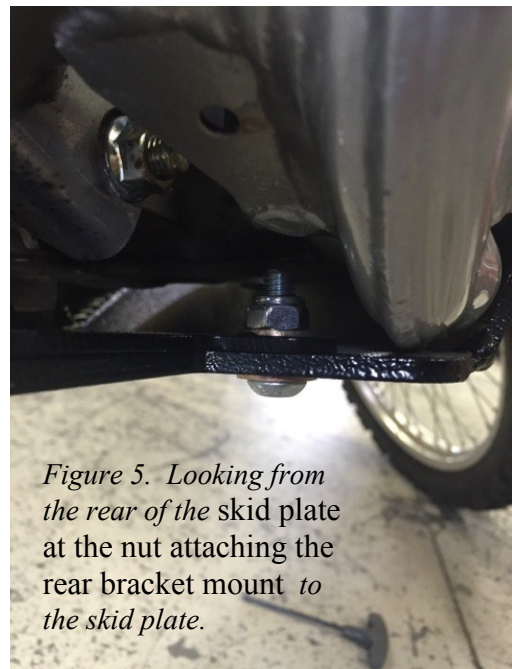


Figure 5. Looking from the rear of the skid plate at the nut attaching the rear bracket mount to the skid plate.

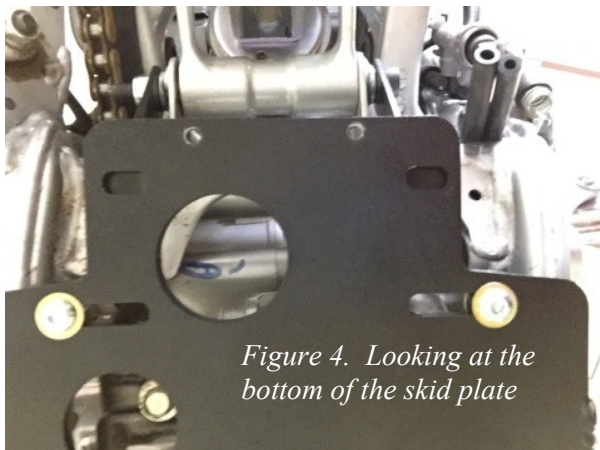


Figure 4. Looking at the bottom of the skid plate

Tighten all bolts. Installation Complete!  
Ride safe!



# HAPPY TRAILS PRODUCTS

HONDA CRF250L SKID PLATE HTP3-3-88

Included in kit:  
Skid plate  
Rear bracket  
Bolt kit

**Hardware List:**  
1 10x140 SH BOLT  
1 10MM MUT  
2 10MM WASH-  
ERS  
2 8x20 BH BOLTS  
2 8MM WASHERS  
2 8MM NUTS  
2 6X20 BH BOLTS

