



Thank you for purchasing Happy Trails products. Our products are proudly hand made in Boise Idaho, USA. If you have any questions or concerns about the installation of this product, please contact us directly at 1-800-444-8770 or e-mail [installation@happy-trail.com](mailto:installation@happy-trail.com).

**IMPORTANT!!!!**

When installing Happy Trails racks, leave all bolt connections loose until the entire product is installed. Then go back and tighten all connections. We recommend the use of thread locking compound.

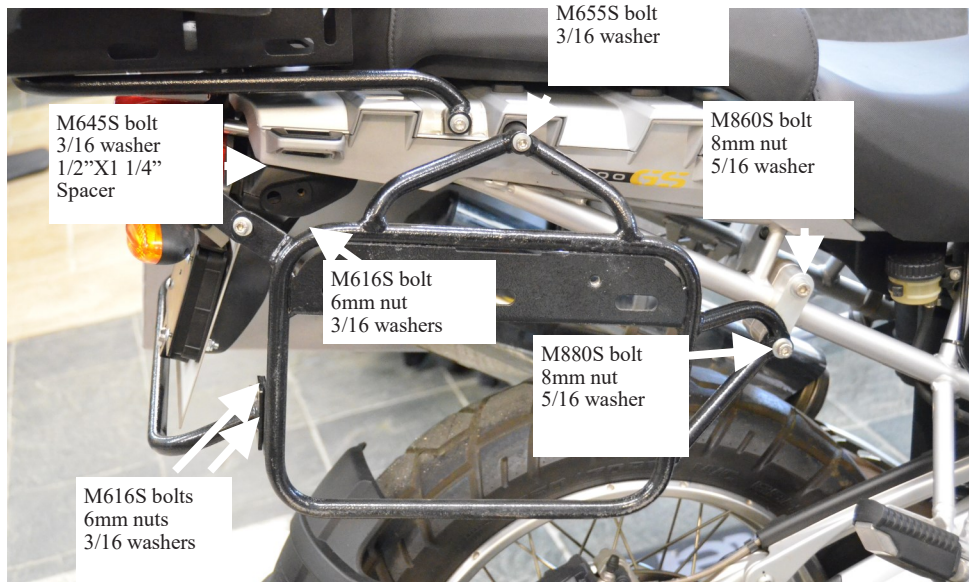
Before you begin, place the bike on a hard level surface where you have room to work. Lay out the parts included in this kit and compare to the parts list on page 3 of these instructions. If any parts or hardware are missing, contact us immediately at the number or email listed above.

**Step 1**

Place clamps on lower sub frame tube between passenger peg and exhaust mount on the left side and behind the passenger peg on the right side. The indexed side faces in towards the wheel with flat side facing out.

**Step 2**

Place M860S bolt through lower hole in the clamps on the left side and through the upper hole on the right side. Then, place the side racks on the bike at the top location (M655S bolt)



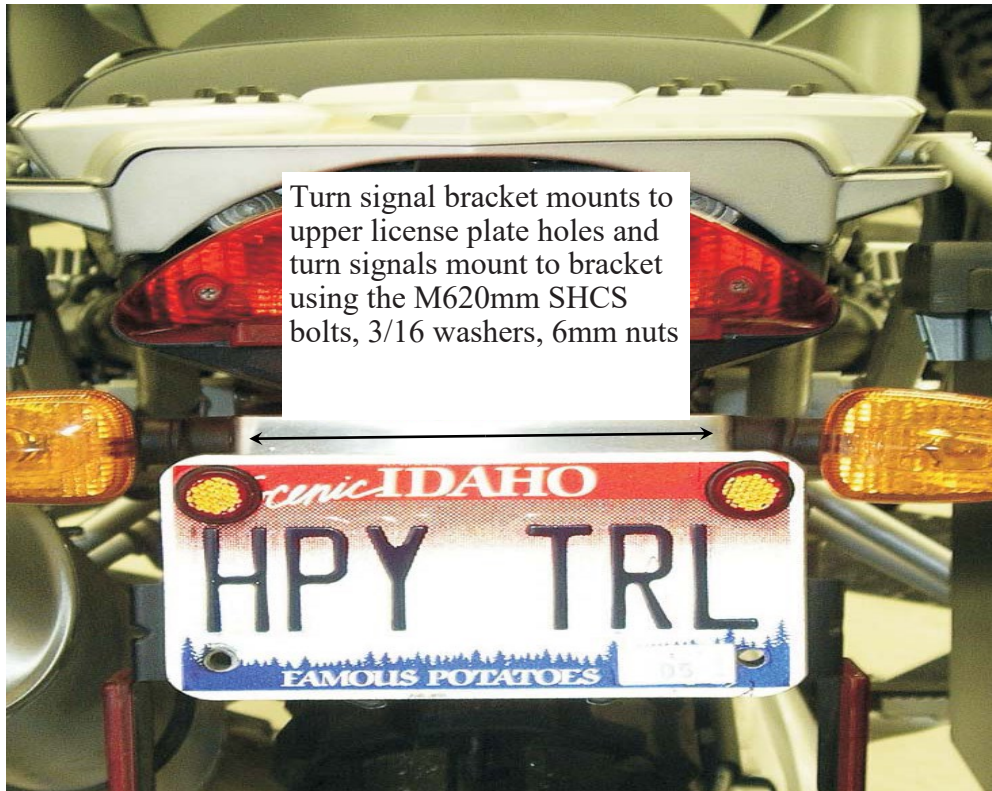
**Step 3**

Next, bolt side racks to the clamps by inserting the M880S bolt through lower clamp half on the right side and upper clamp half on the left side. Install upper rear links near tail light using the 1/2" x 1-1/4" Spacer and M645S bolts at the bike and M616S bolts at the rack.

**Step 4**

Attach the bumper (back support brace) using the M616S bolts, 6mm nuts, 3/16 washers. Tighten all bolts. Installation is complete.

Remove factory luggage mounts. Relocate the turn signals



**Bolt List:**

- 1 M8110S Bolt
- 2 M880S Bolts
- 2 M860S Bolts
  
- 2 M655S Bolts
- 2 M645S Bolts
- 6 M616S Bolts
- 2 M620S Bolts
  
- 8 M6N Nuts
- 4 M8N Nuts
- 16 3/16 Washers
- 6 5/16 Washers
  
- 2 Clamp sets\* (4 pieces)
- 2 1/2"x1 1/4" Spacers
- 1 1"Lx3/4"Wx.319" spacer

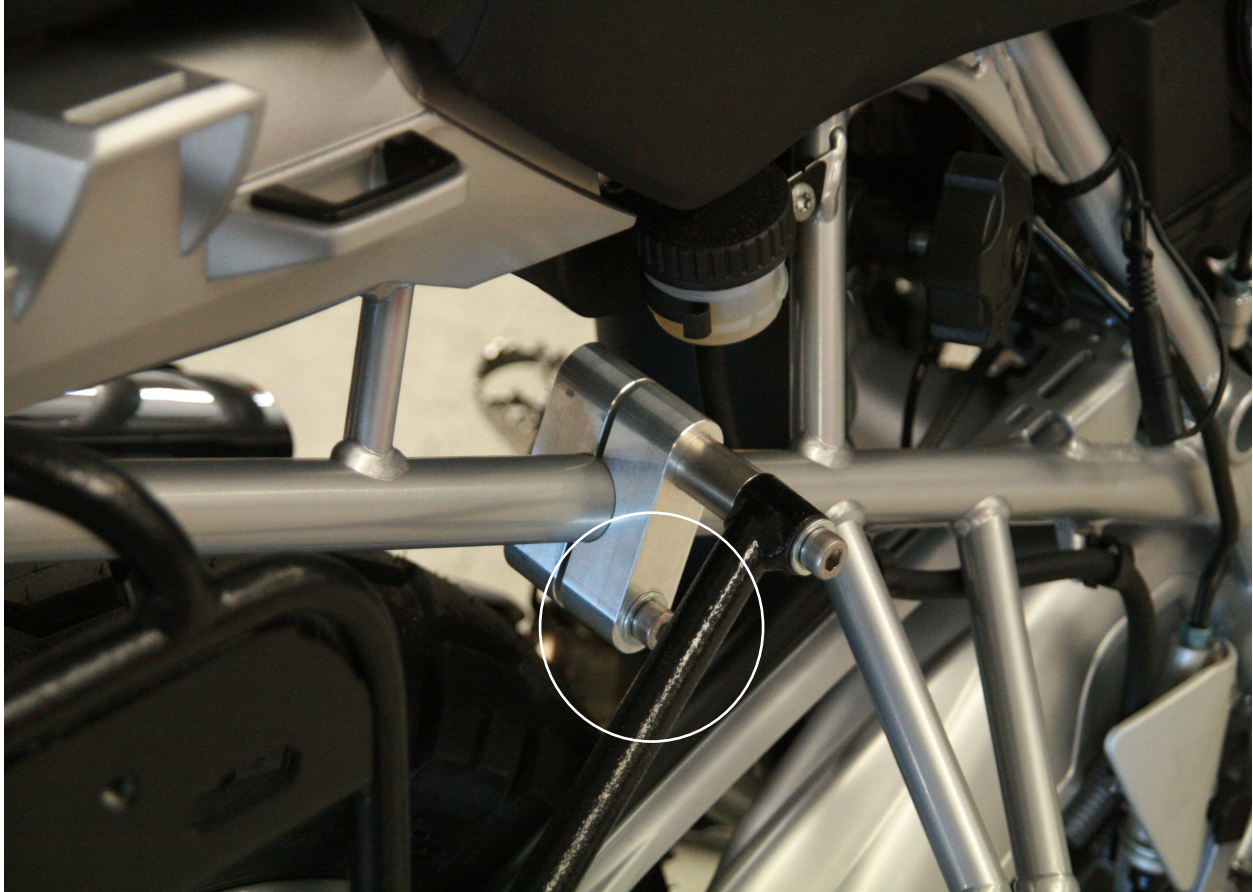
**Hardware List:**

- Left and Right SU Bumper Bolt Kit Instructions License Plate Bracket Pair Turn Signal Bracket



**Happy Trails Products**

\*Indexed clamps have milled notches at both ends.



**Note:**

There have been some reports of the frame clamp on the right side of the bike being twisted, causing the right side pannier to be out of alignment. An M8x10MM bolt and 1"x3/4"x.319" spacer have been included in the bolt kit to remedy this problem. If your frame clamp appears to be twisted, install the bolt and spacer as shown to the right. Please let us know of any fitment issues @ [info@happy-trail.com](mailto:info@happy-trail.com)

**Note:**

**This picture shows the rack installed on the wrong mount point. Make sure to bolt the rack to the lower mount point of the clamp, or it will cause the rack to twist and not line up with the other installation points.**