


HAPPY-TRAIL.COM
Dual Sport & Adventure Touring Specialists

Thank you for purchasing Happy Trails products. Our products are proudly hand made in Boise Idaho, USA. If you have any questions or concerns about the installation of this product, please contact us directly at 1-800-444-8770 or e-mail installation@happy-trail.com.

Before you begin, place the bike on a hard level surface where you have room to work. Lay out the parts included in this kit and compare to the parts list on the final pages of these instructions. If any parts or hardware are missing, contact us immediately at the number or email listed above.

Step 1

The aluminum T3 tail plate attaches directly to the OEM Adventure Model tubular tail rack providing a much larger surface area for your cargo.

This kit utilizes 2 predrilled holes of the universal T3 plate as the rear mount locations and requires the customer to drill the front two holes.

Step 2

First drill two holes into the OEM tube rack at the bottom of the “V” of the rear plate area as shown by the arrows in Fig 2. Use a 1/4” drill bit.

Place the T3 plate on the rack and line up the two predrilled holes on the T3 plate with the bottom of the “V” on the OEM tail rack.

Using the T3 plate holes as guides, drill 2 holes through the OEM rack as shown in Fig 2. Secure T3 to OEM rack using two bolts and nuts. Tighten just so plate does not move around.

Step 3

Slide the flat bar included in the kit through the “slots” in the sides of the OEM tail rack as shown in Fig 3. Slide the flat bar to the front of those slots and center it left to right. Use a drill bit or similar instrument to then mark the drill locations for the front two mount holes on the T3 plate. See arrows in Fig 3 and Fig 4.

Remove the plate from the bike to drill the front two holes.

Fig 1

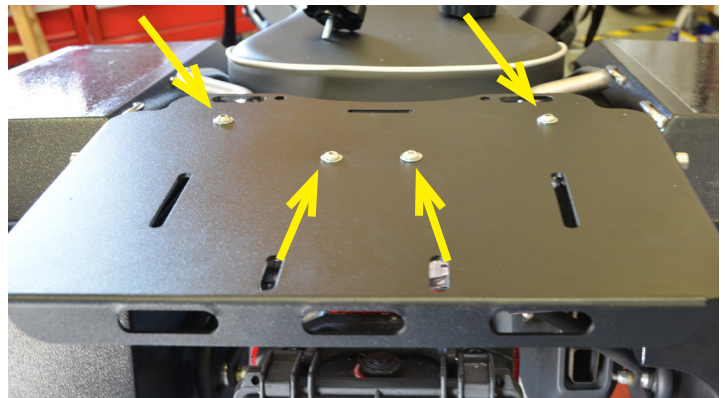


Fig 2

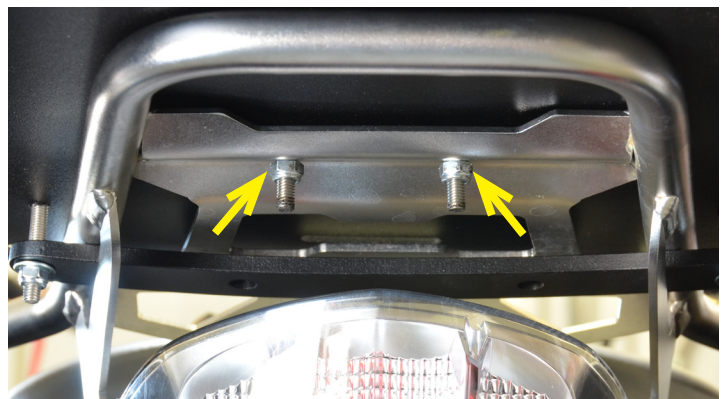


Fig 3

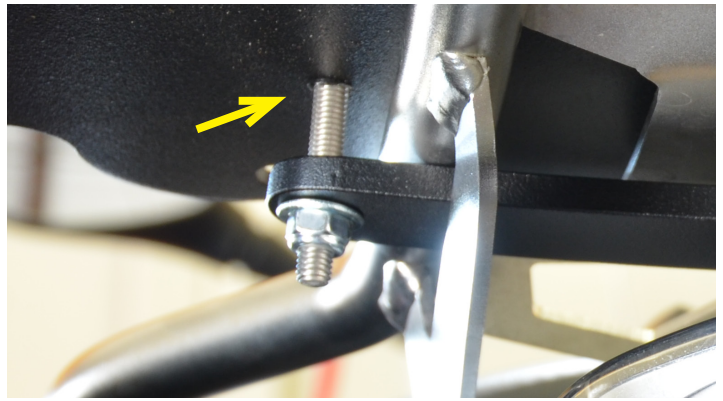


Step 4

For more precise hole placement, place the flat bar directly on the back side of the T3 plate as a template to make sure the two drill locations are centered on the tail plate.

Drill the two holes using 1/4" drill bit.

Fig 4



Step 5

Place the small aluminum spacers over the holes that were drilled in the OEM rack in step 2. These prevent the tail plate from "bowing" when rear bolts are tightened down.

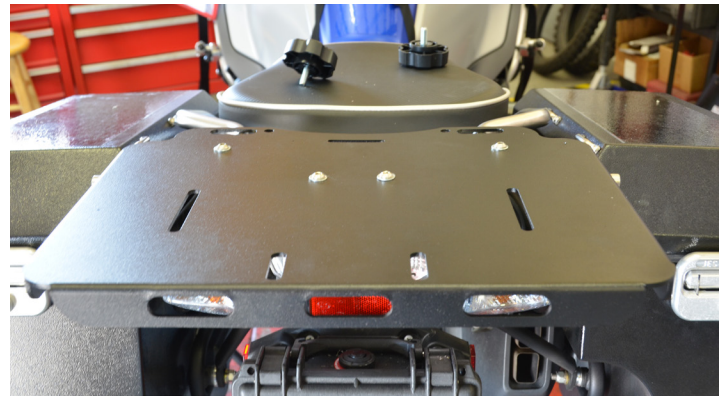
Place the T3 plate on top of the spacers and OEM rack.

Insert two M6x25 bolts with flat washers top and bottom through the rear two mount holes, through spacers, and the OEM rack holes. Secure with a nylock nut.

Insert the flat bar through the OEM rack slots as outlined in Step 3 and secure with two M6x40 bolts, flat washers and nylock nuts.

Tighten all bolts to secure tail plate. Note they do not need to be tightened to normal 6mm torque spec because of the self locking nylock nuts.

Fig 5



Recommended Tools:

6mm Allen Wrench
5mm Allen Wrench
10mm box end wrench

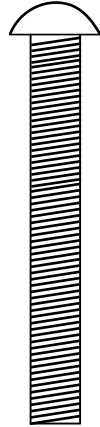
Hardware List:

T3 Tail Plate (no pre drill)
Bolt Kit
Instructions



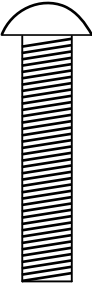
8/26/14
Rev. 1
JE

HTP1-13A-7 BMW R1200GS Water "Adventure Model" Tail Plate



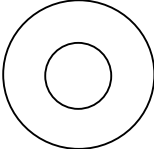
X2

M640B



X2

M625B



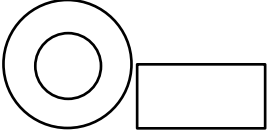
X8

6mm FW



X4

M6N



X2

OD1/2, ID .257, L 1/4 Spacer



X1

KTM Low Light Crossover Bar. Approx 1" Wide x 10.25" Long (Powder Coated)